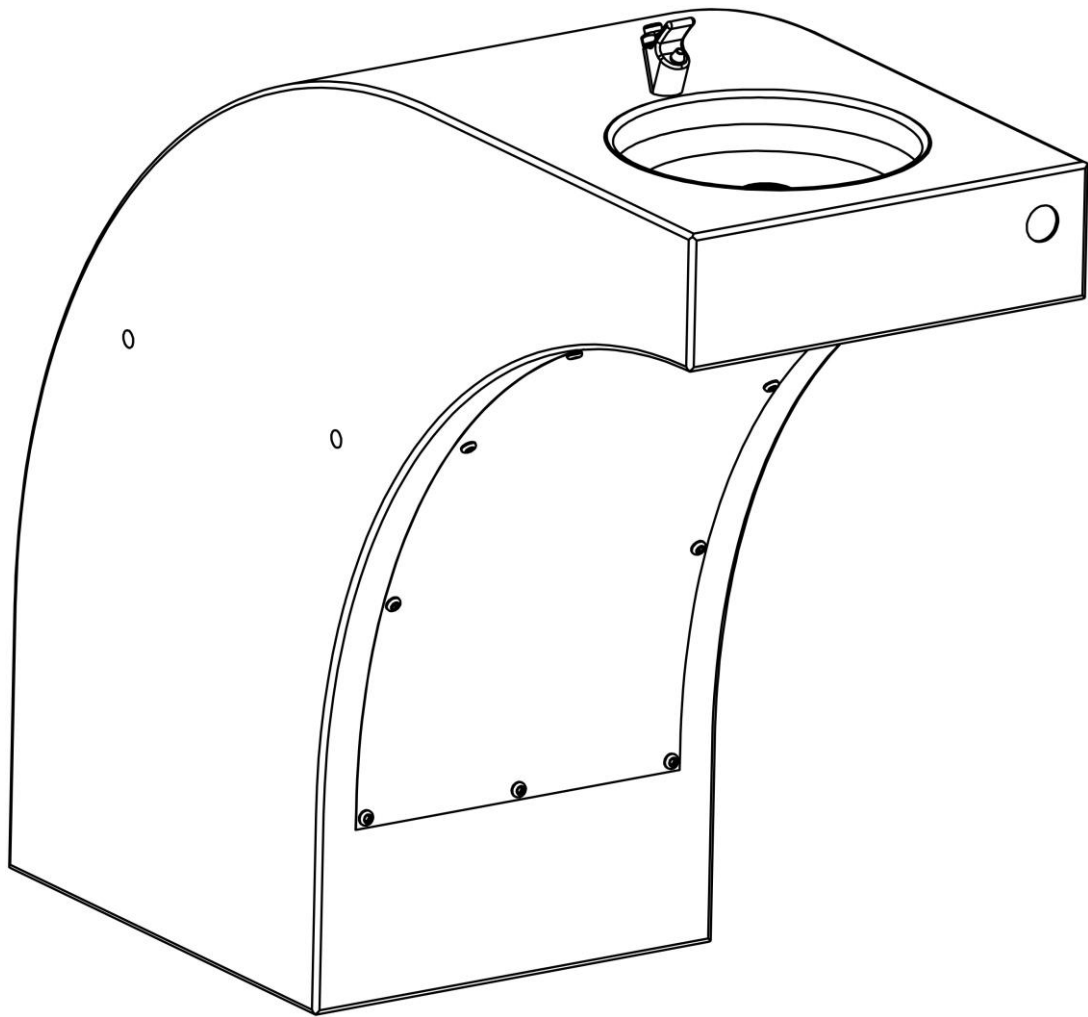


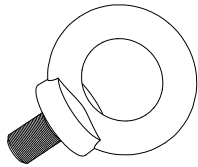
БЕТОННА ЧЕШМА

МОДЕЛ 123

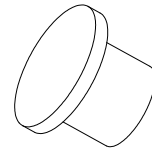
Инструкции за монтаж



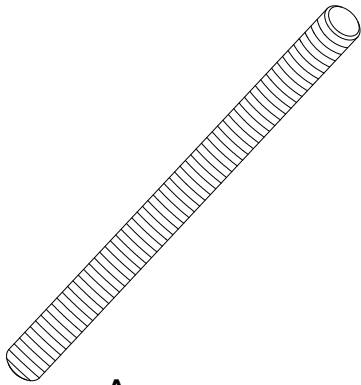
Забележка: Всички свързващи елементи са от неръждаема стомана.



Ринг болт М10
4 бр



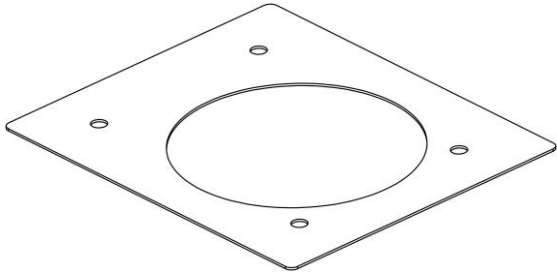
Пластмасоватапа
4 бр



Анкер шпилка $\varnothing 16$
4 бр



Коланиза повдигане
2 бр



Шаблон за разпробиване
на отвор в бетонната основа
1 брой



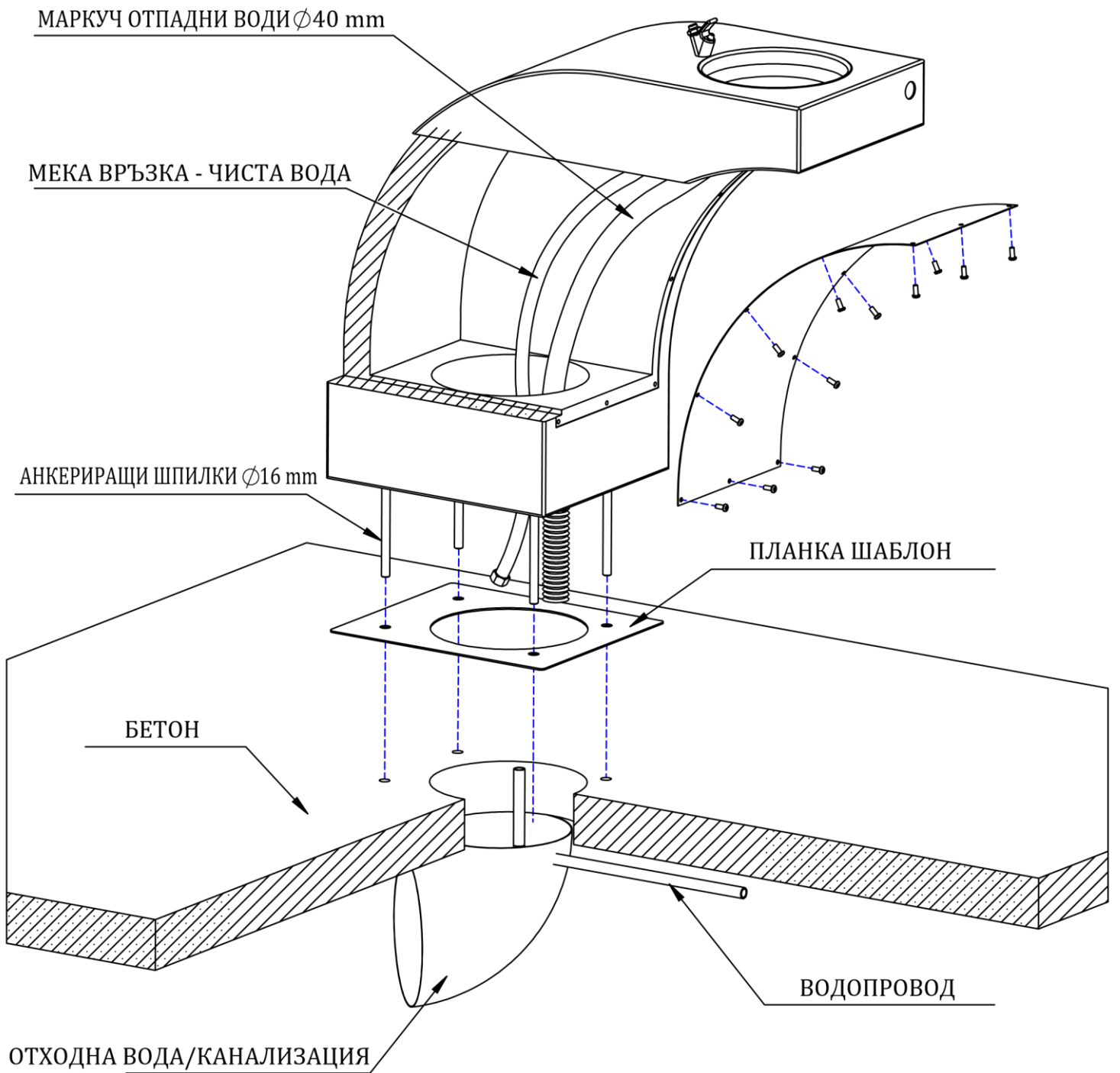
S4



S3

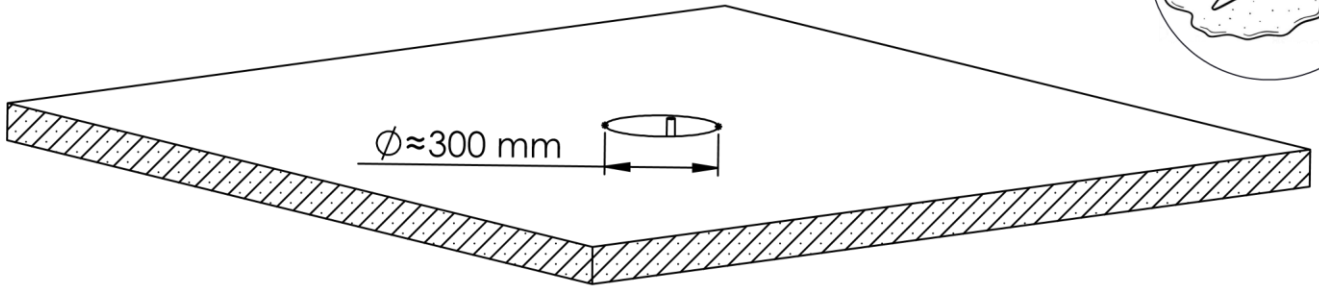
Инбусни ключове

ОБЩА СХЕМА

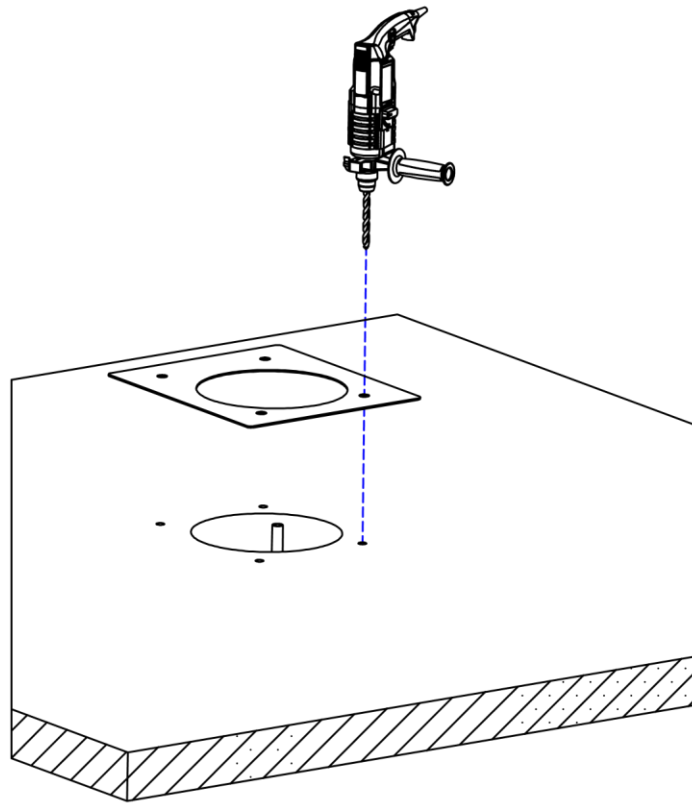


ПОДГОТОВКА НА БЕТОННИЯ ФУНДАМЕНТ

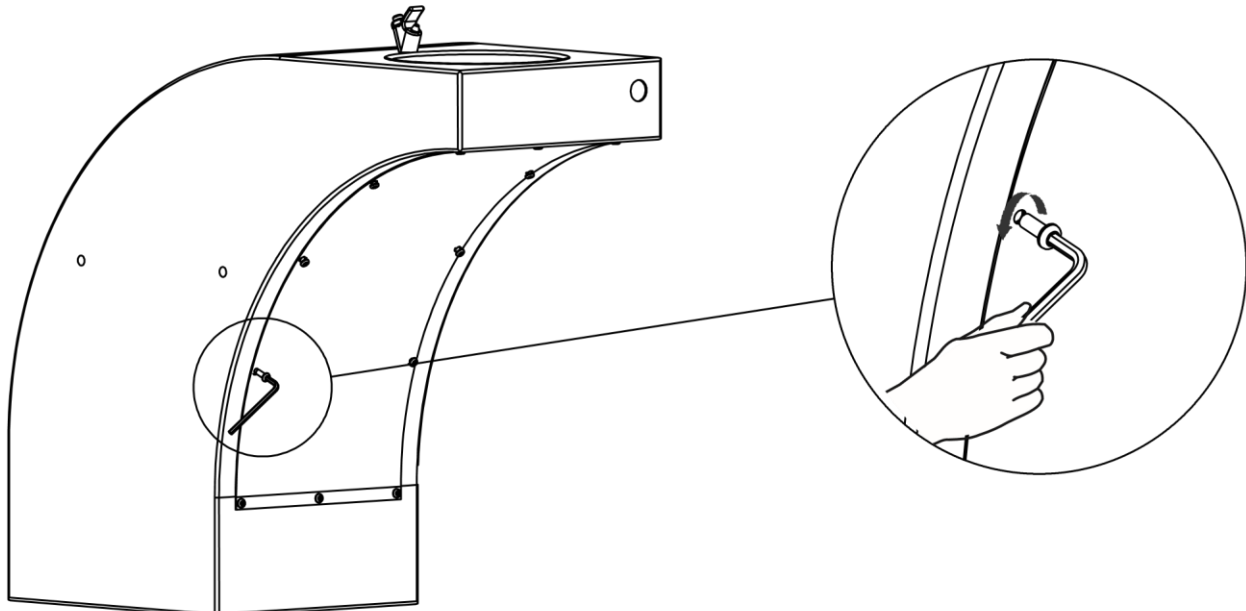
1



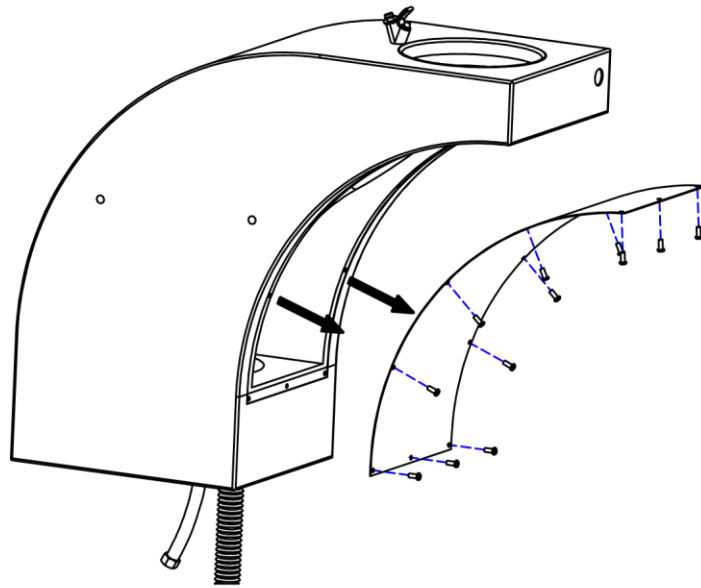
2



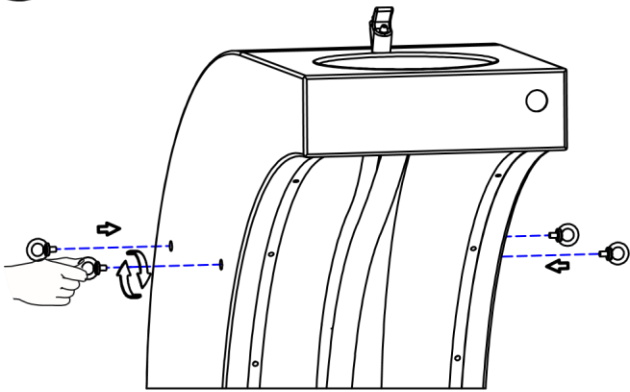
3



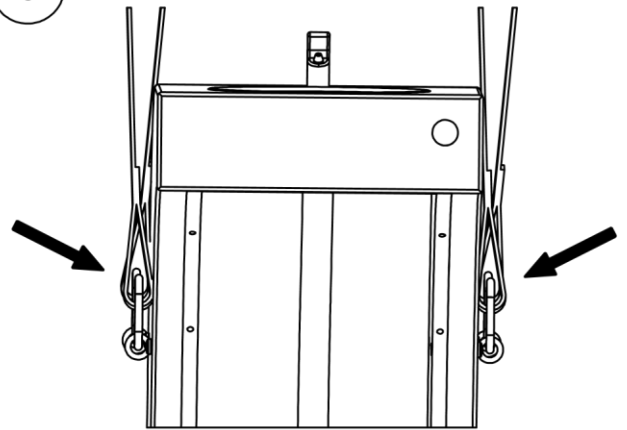
4



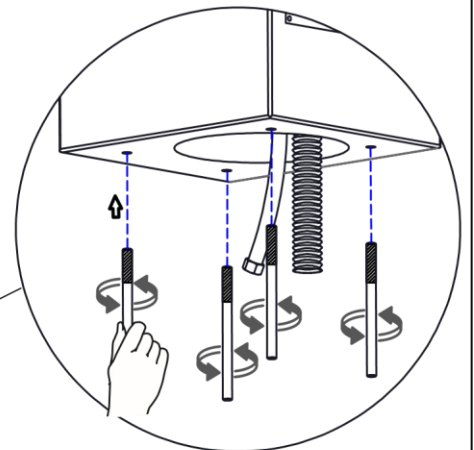
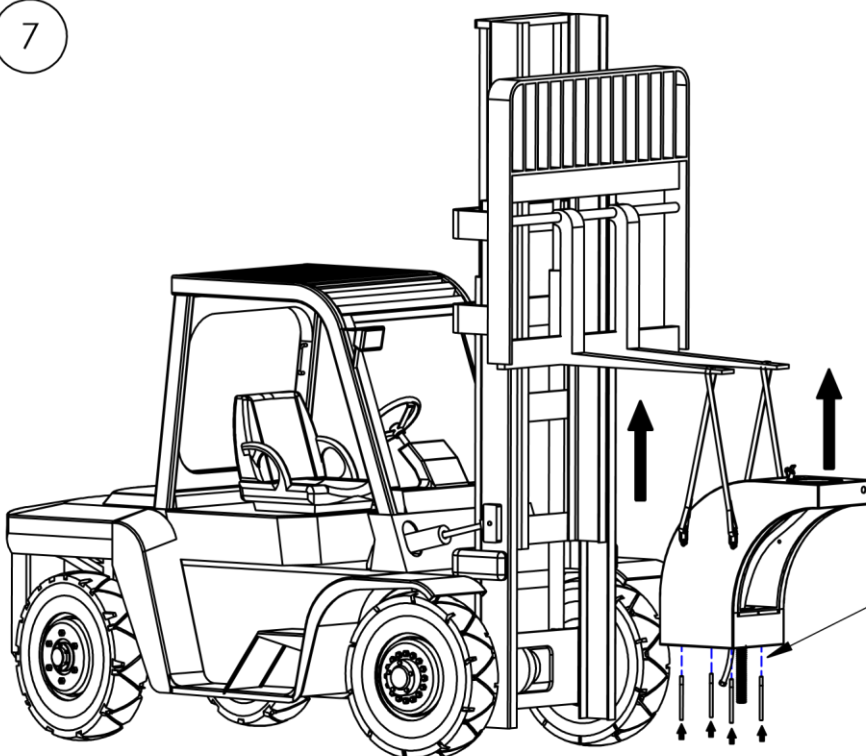
5



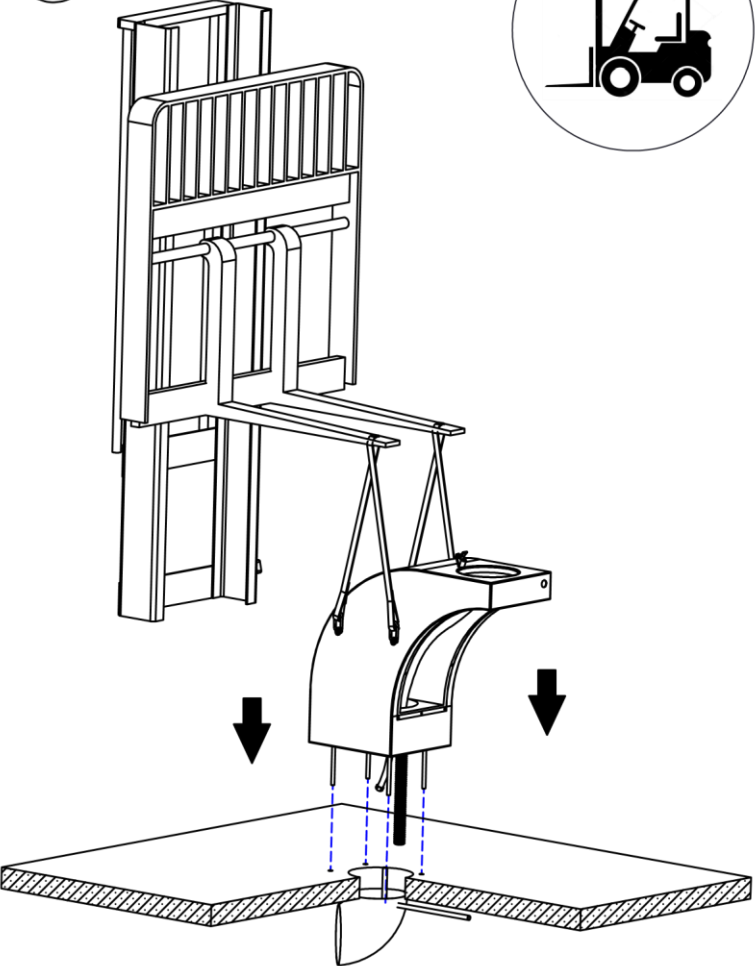
6



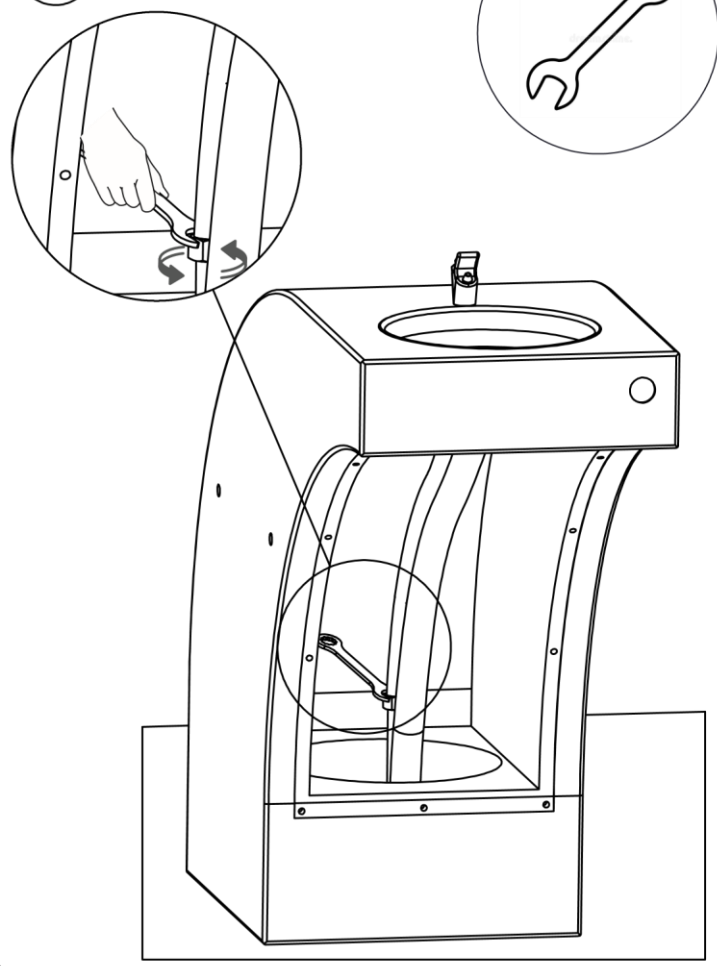
7



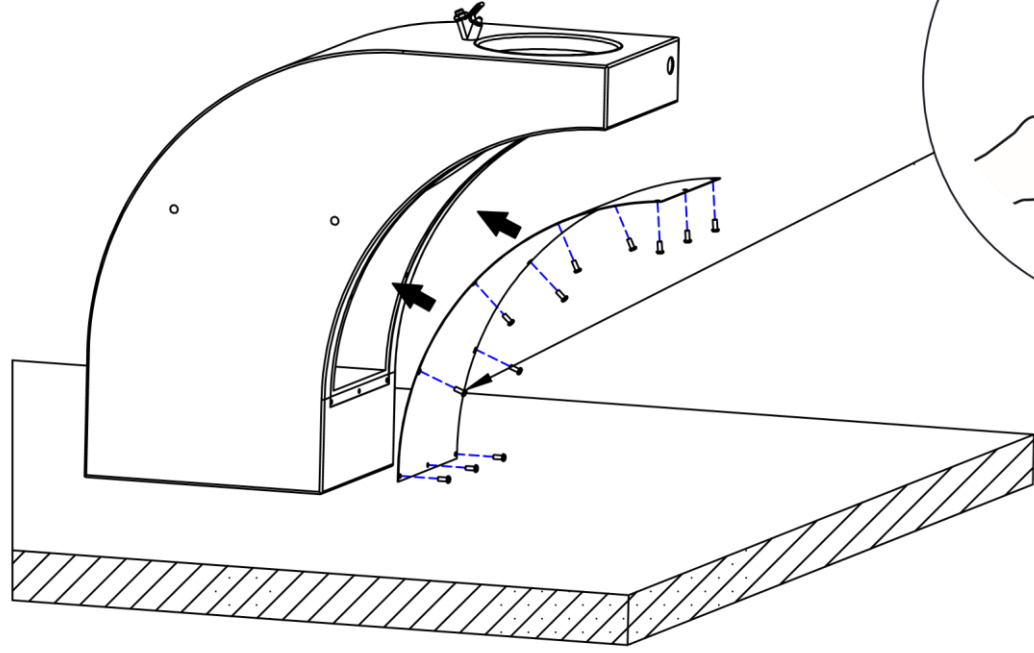
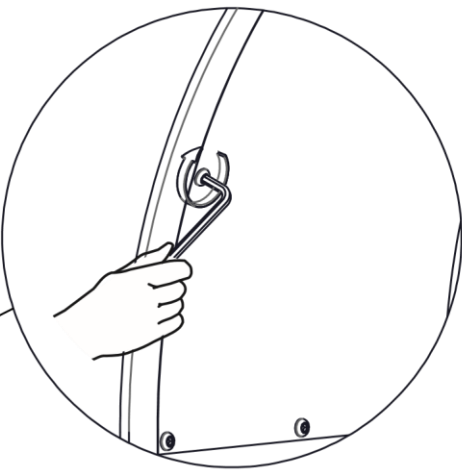
8



9

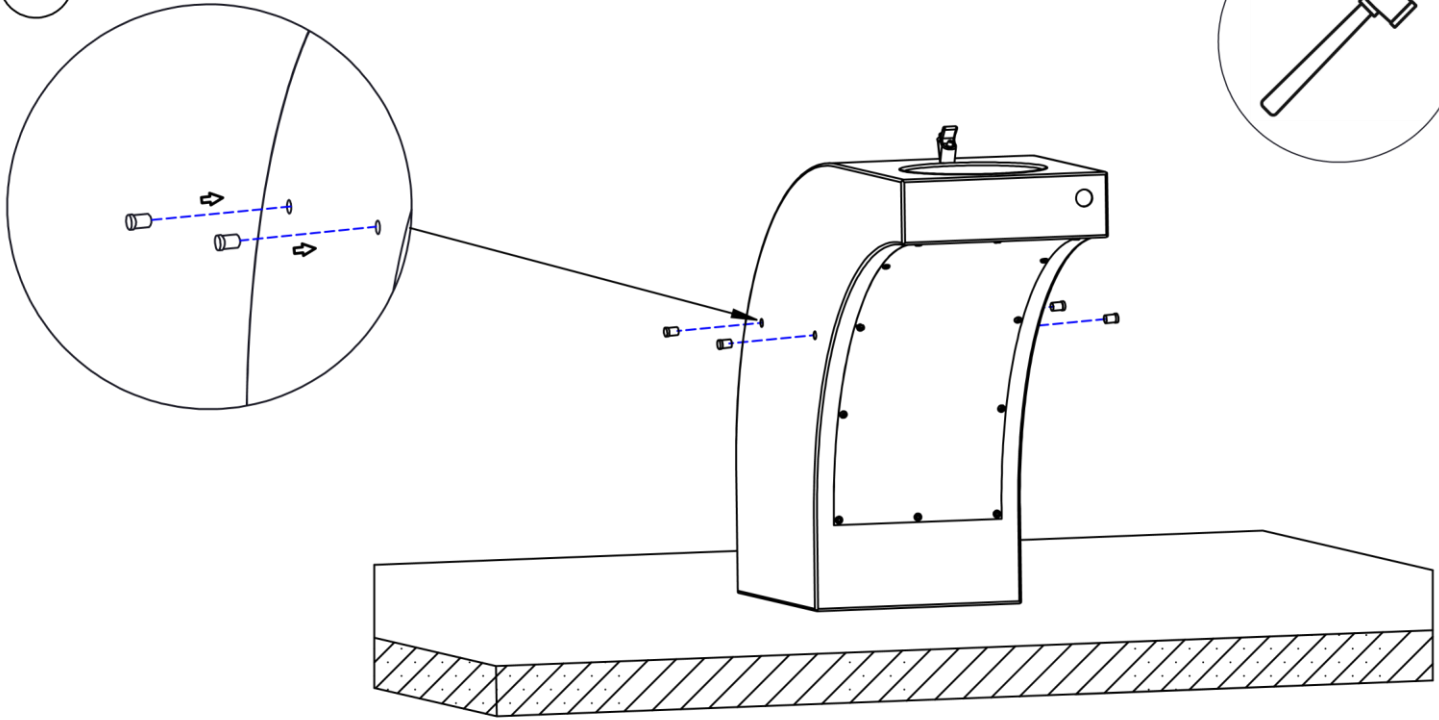
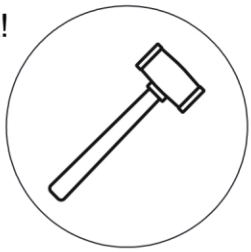


10



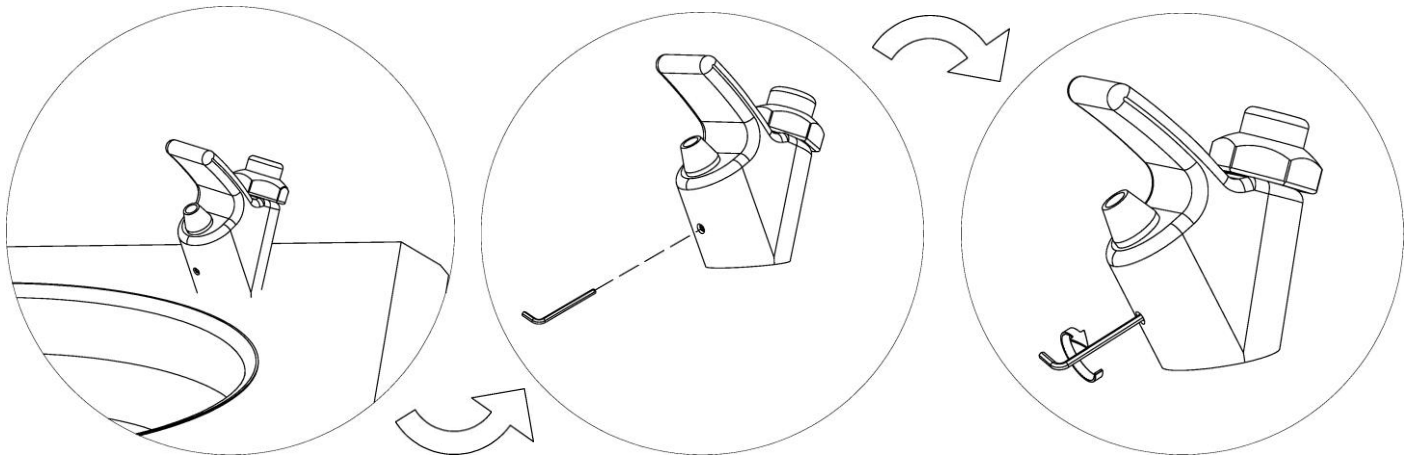
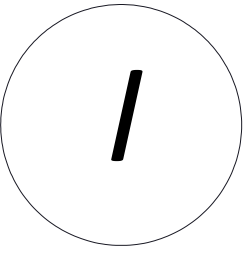
*Използвайте само гумен чук!

11



12

За да настроите силата на водната струя използвайте шестограм S3!



Завъртете наляво или надясно шестограма докато водата тече и настройте силата на струята по ваше желание.